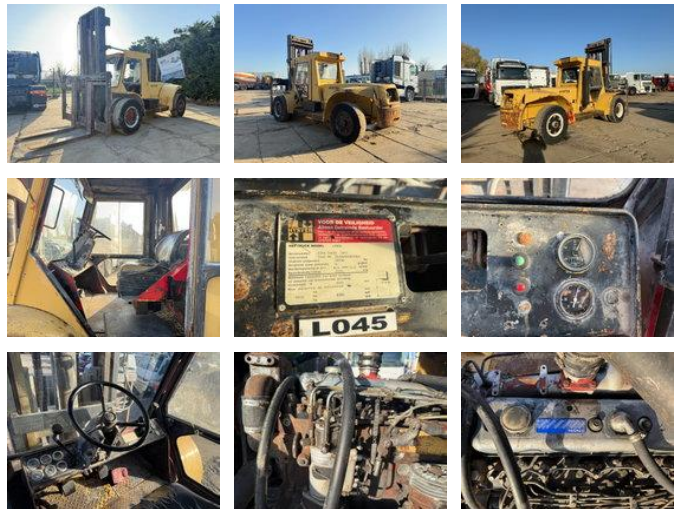


## Hyster H300B Heftruck 13.6 Ton Perkins engine H300B Heftruck 13.6 Ton Perkins engine

### Caractéristiques générales

Marque	Hyster
Sous-catégorie	Tout-terrain
Lecture du compteur horaire	13412
Condition	Utilisé
Conditions générales	Bien
Carburant	Diesel



### Caractéristiques

Cabine	Fermé
Capacité de levage	13.600kg
Hauteur de levage	5.855mm
Mast type	Triplex
Hauteur de passage	3.450mm

# Hyster H300B Heftruck 13.6 Ton Perkins engine H300B Heftruck 13.6 Ton Perkins engine

## Spécifications techniques

Actifs

1hp

## Description

HYSTER H300B Heftruck 13.6 Ton Type: Heftruck Year: 1983 Hours: 13.412 Hrs VAT ID: Vat vehicle, listed price is netto price. Specifications: 6 Cilinder perkins engine(Perkins 6.354) without turbo, 130HP CE Certificate. 13375KG Triplex mast Maximum lift height: 5855 mm Free lift mast (forks lift before mast extends) Side shift attachment (hydraulic left/right movement) Carriage width: 2440 mm Maximum lifting capacity: 13.6 tons Rated capacity: 6600 kg @ 1200 mm load center Heavy-duty industrial mast Suitable for handling long and heavy loads Machine is in Good condition. We can arrange shipment worldwide. FOR OUR COMPLETE STOCK, CHECK OUR WEBSITE: [www.tonytrucks.com](http://www.tonytrucks.com)

## Accessoires