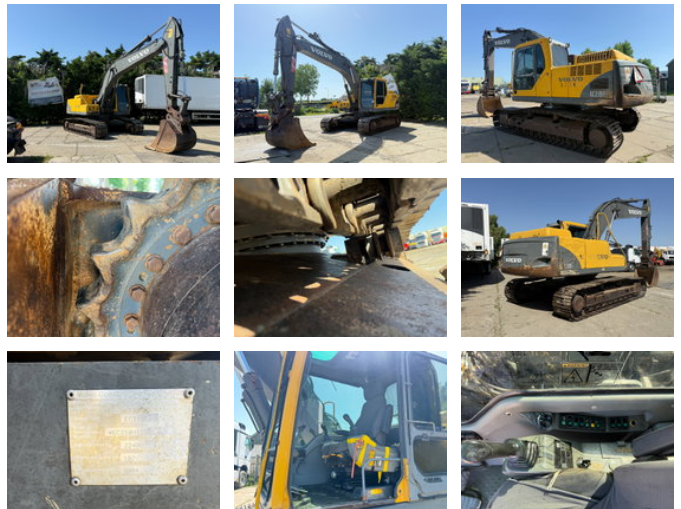


## Volvo EC 210BL Excavator Quick Coupler

### Algemene kenmerken

Merk	Volvo
Subcategorie	Rupsgraafmachine
Bouwjaar	2004
Datum eerste registratie	03-05-2004
Afgelezen urenstand	13185
Kleur	Geel
Conditie	Gebruikt
Algemene staat	Goed
Brandstof	Diesel
CE markering	Ja



### Eigenschappen

Ledig gewicht

22.400kg

# Volvo EC 210BL Excavator Quick Coupler

## Technische specificaties

Aandrijving	tracking
Vermogen	107kw

---

## Omschrijving

VOLVO EC 210BL Excavator Hammerline Quick coupler Type: Excavator Year: 2004 Hours: 13.185 Hrs VAT ID: Vat vehicle, listed price is netto price. Specifications: 6 Cilinder VOLVO (D6D) engine, 107KW. Mechanical diesel pump. Undercarage: 80% Quick Coupler No crack no weld. Machine is in TOP condition. We can arrange shipment worldwide. FOR OUR FULL STOCK, CHECK OUR WEBSITE: [www.tonytrucks.com](http://www.tonytrucks.com)

## Accessoires