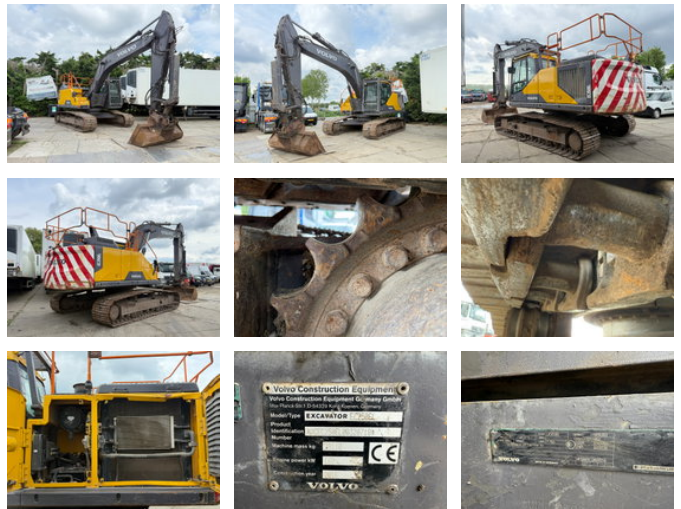


## Volvo EC 250EL Excavator Hammerline Quick Coupler

### Algemene kenmerken

Merk	Volvo
Subcategorie	Rupsgraafmachine
Bouwjaar	2016
Datum eerste registratie	01-06-2016
Afgelezen urenstand	9858
Kleur	Geel
Conditie	Gebruikt
Algemene staat	Goed
Brandstof	Diesel
CE markering	Ja



### Eigenschappen

Ledig gewicht

29.110kg

# Volvo EC 250EL Excavator Hammerline Quick Coupler

## Technische specificaties

Aandrijving	tracking
Vermogen	160kw

---

## Omschrijving

VOLVO EC 250EL Excavator Hammerline Quick coupler Type: Excavator Year: 2016 Hours: 9.858 Hrs VAT ID: Vat vehicle, listed price is netto price. Specifications: 6 Cilinder VOLVO (D8J) engine, 160KW. Mechanical diesel pump. Undercarage: 80% Quick Coupler Hammerline No crack no weld. Made in Germany Machine is in TOP condition. We can arrange shipment worldwide. FOR OUR FULL STOCK, CHECK OUR WEBSITE: [www.tonytrucks.com](http://www.tonytrucks.com)

## Accessoires