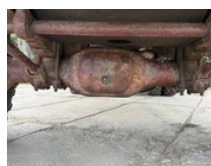
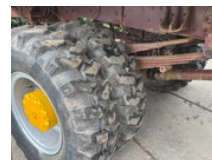


Mercedes-Benz SK 1922 V6 4X4 Chassis Full Spring/Lamme Manual Gear

General features

Brand	Mercedes-Benz
Model	SK 1922
Subcategory	Chassis cab
Odometer reading	342.581km
Construction year	1987
Date of first registration	10-03-1987
Color	White
Condition	Used
General condition	Good
Fuel	Diesel



Mercedes-Benz SK 1922 V6 4X4 Chassis Full Spring/Lamme Manual Gear

Technical specifications

Number of axes	2
Axis configuration	4x4
Transmission	Manual
Engine output	220hp

Accessories