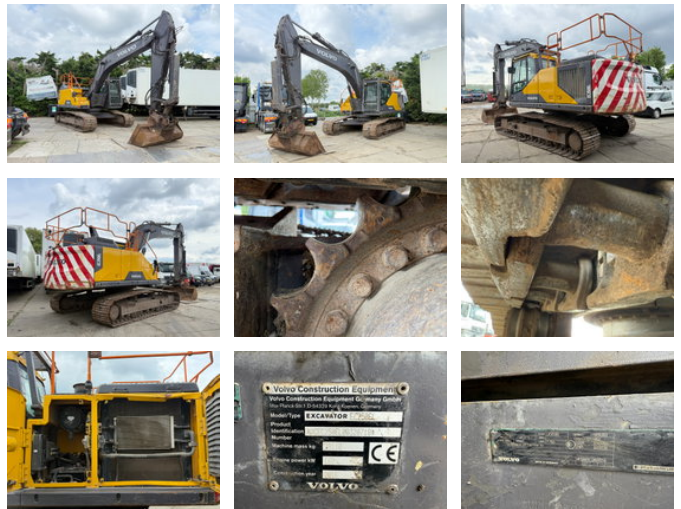


Volvo EC 250EL Excavator Hammerline Quick Coupler

General features

Brand	Volvo
Subcategory	Crawler excavator
Construction year	2016
Date of first registration	01-06-2016
Hourmeter reading	9858
Color	Yellow
Condition	Used
General condition	Good
Fuel	Diesel
CE marking	Yes



Characteristics

Empty weight 29.110kg

Volvo EC 250EL Excavator Hammerline Quick Coupler

Technical specifications

Drive	tracking
-------	----------

Engine output	160kw
---------------	-------

Accessories